

Week 18, Match the instrument to the correct instrument name.

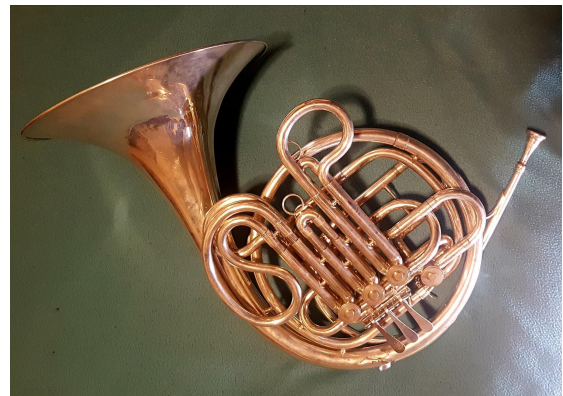
1. Trumpet



2. French horn



3. Trombone



4. Tuba



Week 18, Answer the questions below about brass instruments.

1. What brass instruments use a slide instead of keys to change notes?

2. What brass instrument is the highest instrument in the brass family?

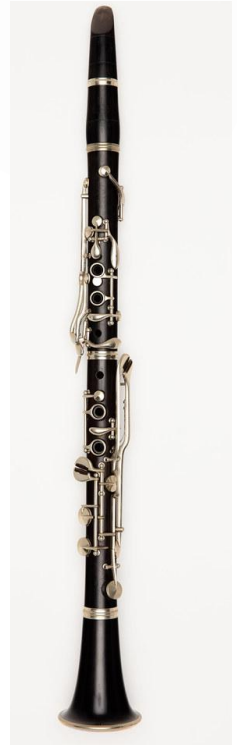
3. What brass instrument is the lowest instrument in the brass family?

Week 19, Match the instrument to the correct instrument name.



1. Clarinet

2. Flute



3. Bassoon



Week 19, Answer the questions below about woodwind instruments.

1. What woodwind instruments does not use a reed?

2. What is one of the double reed instruments?

3. What woodwind instrument is usually made of brass?

Week 20, Answer the questions below.

1. What is your favorite instrument that we have learned about?

2. Does it belong to the brass family or the woodwind family?

3. Is it pitched high, low or in the middle?

Week 20, List four instruments in the instrument families below.

Brass family

1) _____

2) _____

3) _____

4) _____

Woodwind Family

1) _____

2) _____

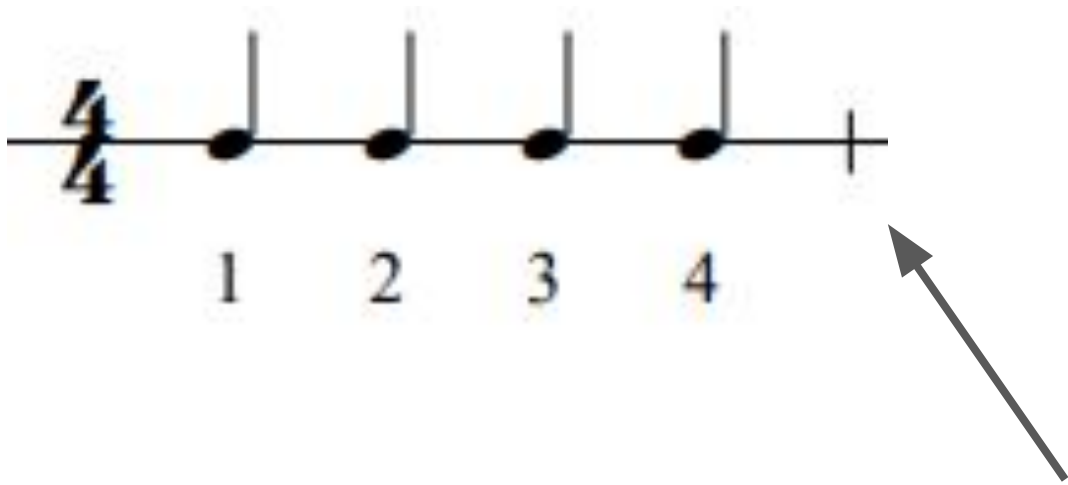
3) _____

4) _____

Week 21 Counting in Music

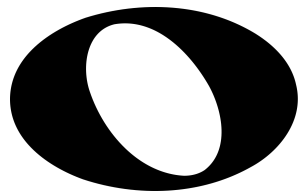
Most music that we have seen is in $\frac{4}{4}$ time. This means that each measure of music has 4 beats.


For example, we have one measure of music below and 4 quarter notes.




The line where the arrow is pointing is called a bar line. This is how we separate music into different measures.

As we said before, each measure in $\frac{4}{4}$ time has 4 beats.

 = 4 beats

 = 1 beat

 = 2 beats

Week 21 Counting in Music

Write the correct counting under each note
The first one has been done for you.

The worksheet consists of eight musical staves, each with a 4/4 time signature. The first staff is pre-filled with notes and counting numbers. The other seven staves are empty for practice.

Staff 1 (Pre-filled):

- Measure 1: Four quarter notes (C4, D4, E4, F4) with counting numbers 1, 2, 3, 4 below them.
- Measure 2: Two half notes (G4, A4) with counting numbers 1, 2 below them.
- Measure 3: Four quarter notes (B4, C5, B4, A4) with counting numbers 1, 2, 3, 4 below them.
- Measure 4: One whole note (G4) with counting numbers 1, 2, 3, 4 below them.

Staff 2:

- Measure 1: One whole note (C4).
- Measure 2: Four quarter notes (D4, E4, F4, G4).
- Measure 3: Two half notes (A4, B4).
- Measure 4: One whole note (C5).

Staff 3:

- Measure 1: Two half notes (C4, E4).
- Measure 2: One whole note (G4).
- Measure 3: Two half notes (A4, C5).
- Measure 4: One whole note (E5).

Staff 4:

- Measure 1: Two half notes (C4, E4).
- Measure 2: Four quarter notes (F4, G4, A4, B4).
- Measure 3: Four quarter notes (C5, B4, A4, G4).
- Measure 4: One whole note (F4).

Staff 5:

- Measure 1: One whole note (C4).
- Measure 2: Four quarter notes (D4, E4, F4, G4).
- Measure 3: One whole note (A4).
- Measure 4: Two half notes (B4, C5).

Staff 6:

- Measure 1: Four quarter notes (C4, D4, E4, F4).
- Measure 2: One whole note (G4).
- Measure 3: Four quarter notes (A4, B4, C5, B4).
- Measure 4: Two half notes (A4, G4).

Staff 7:

- Measure 1: Four quarter notes (C4, D4, E4, F4).
- Measure 2: Four quarter notes (G4, A4, B4, C5).
- Measure 3: Four quarter notes (B4, A4, G4, F4).
- Measure 4: One whole note (E4).

Staff 8:

- Measure 1: Two half notes (C4, E4).
- Measure 2: Four quarter notes (F4, G4, A4, B4).
- Measure 3: One whole note (C5).
- Measure 4: Two half notes (B4, A4).

Week 22, Counting in Music

Barline Activity Sheet 1

Add barlines to the following passages.
Each starts on the first beat of the bar.

